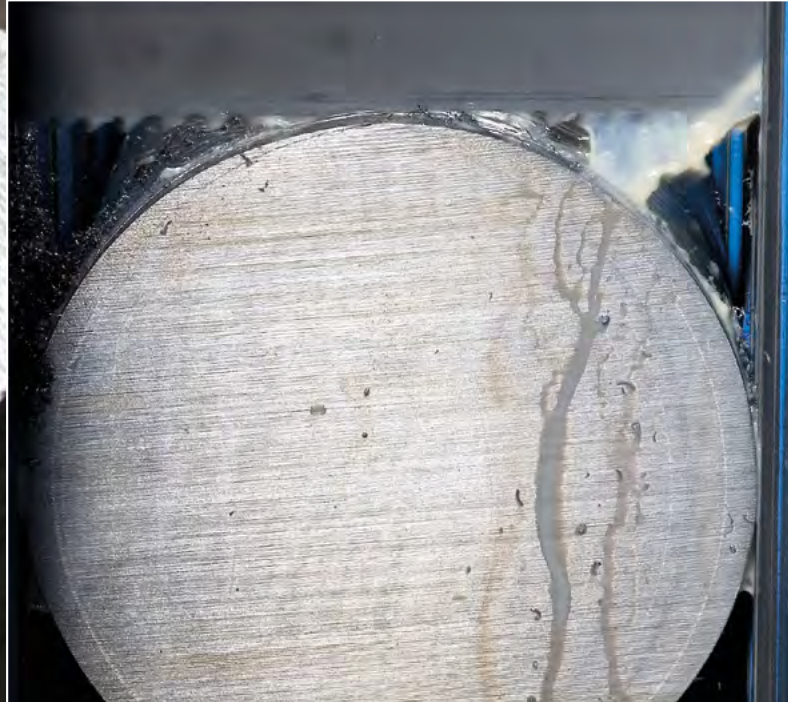




2022



BI-METAL

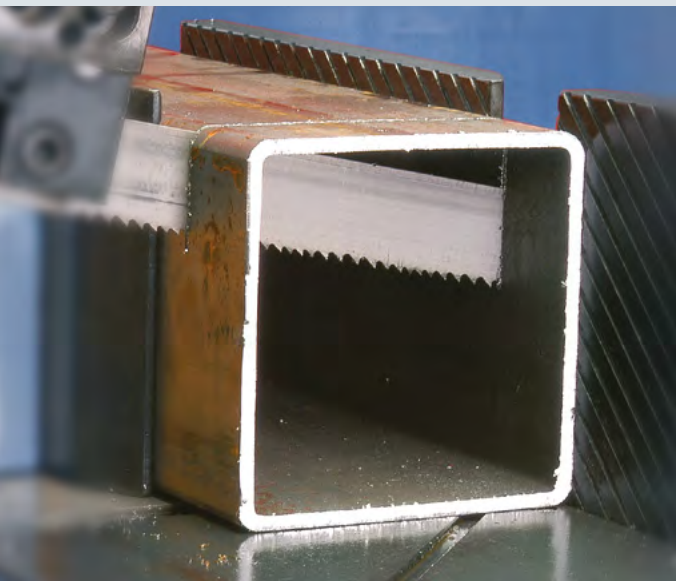
BANDSAW BLADES



VALUE ADDED CUTTING

STANDARD

Product Group 450



WESPA BITEC ONE

M42 Standard bandsaw blade for general purpose application with soft and medium machinability. 18-5/8 tpi with a zero degrees rake angle for thin and small dimensions.

width x thickness		teeth per inch 0° rake angel						
inch	mm/TPI	18	14	10	10/14	8/12	6/10	5/8
1/4	6 x 0,90		■	■	■			
3/8	10 x 0,90		■	■	■			
1/2	13 x 0,65	■	■	■	■	■	■	
1/2	13 x 0,90		■	■	■	■	■	
3/4	20 x 0,90		■		■	■	■	■
1	27 x 0,90		■		■	■	■	■
1 1/4	34 x 1,10							■
1 1/2	41 x 1,30							■
2	54 x 1,30							
2	54 x 1,60							
2 5/8	67 x 1,60							
3 1/8	80 x 1,60							

Product Group 454



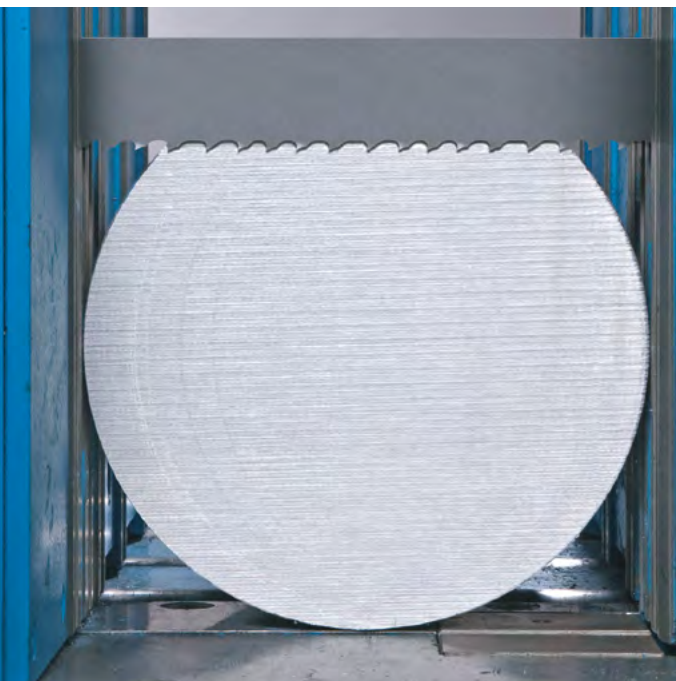
WESPA XENOTEC^{new}

New universal bandsaw blade with a complete new tooth design and variable setting for solid, tubes and structural shapes for cutting single, layers or bundle. Special tooth geometry provides a versatile cutting.

width x thickness		teeth per inch positive rake angel						
inch	mm/TPI	12/16	8/11	6/9	5/7	4/6	3/4	2/3
3/4	20 x 0,90	■	■	■	■	■		
1	27 x 0,90	■	■	■	■	■	■	■
1 1/4	34 x 1,10		■	■	■	■	■	■

HIGH PERFORMANCE

Product Group 453 | 453 IPC



WESPA SUPER SCL

New high-performance Bi-Metal band saw blade with unique tooth geometry and positive rake angle, designed to cut hard materials and stainless steels. Special feature is the very quiet sawing and smooth surface. Designed for machines with constant and variable feed rate.

SUPER SCL: Unique variable tooth geometry and reinforced tooth design

width x thickness		teeth per inch positive rake angel						
inch	mm/TPI	4/6	3/4	2/3	1,4/2	1,1/1,4	0,7/0,9	
1	27 x 0,90	■	■	■				
1 1/4	34 x 1,10	■	■	■				
1,5	41 x 1,30		■	■	■			
2	54 x 1,30			■				
2	54 x 1,60		■	■	■	■		
2 5/8	67 x 1,60				■	■	■	

SUPER SCL IPC coated: With high-quality coating for reduced cutting time, material up to 1000 N/mm²

width x thickness		teeth per inch positive rake angel			
inch	mm/TPI	2/3	1,4/2	1,1/1,4	0,7/0,9
1 1/2	41 x 1,30	■	■		
2	54 x 1,60	■	■	■	
2 5/8	67 x 1,60		■	■	■

STANDARD

From 6-0,75/1,25 tpi with a positive rake angle for solid material and general purpose application with soft and medium machinability.

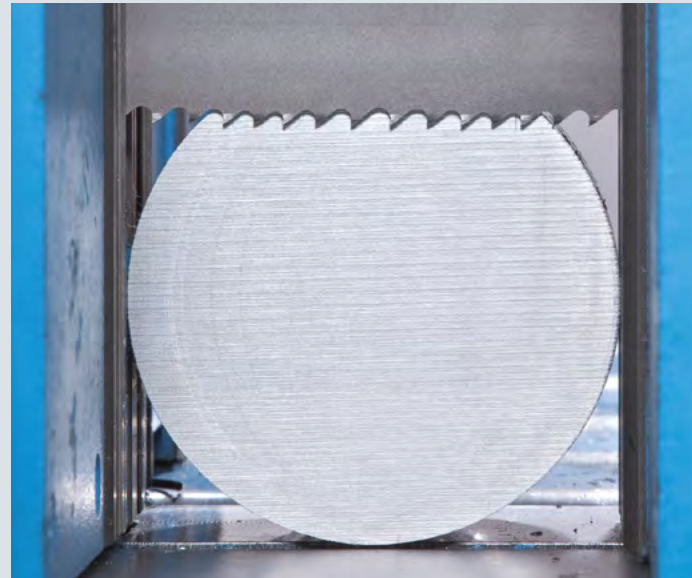
teeth per inch positive rake angel										
6	4	4/6	3	3/4	2	2/3	1,25	1,4/2	1,1/1,4	0,75/1,25
■										
■	■									
■	■									
■	■		■							
			■							
■		■	■	■	■	■				
		■	■	■	■	■	■			
		■	■	■	■	■	■	■		
		■	■	■	■	■	■	■	■	
		■	■	■	■	■	■	■	■	■
		■	■	■	■	■	■	■	■	■

WESPA XTREMA^{new}

Next generation of Xtrema bandsaw blades for production structural steel cutting in steel service center, for cutting beams with an unique variable teeth pattern to avoid blade pinching during the cut. Advantages of the bandsaw blade is the quite cut, long blade life and the wide range from small to large beams.

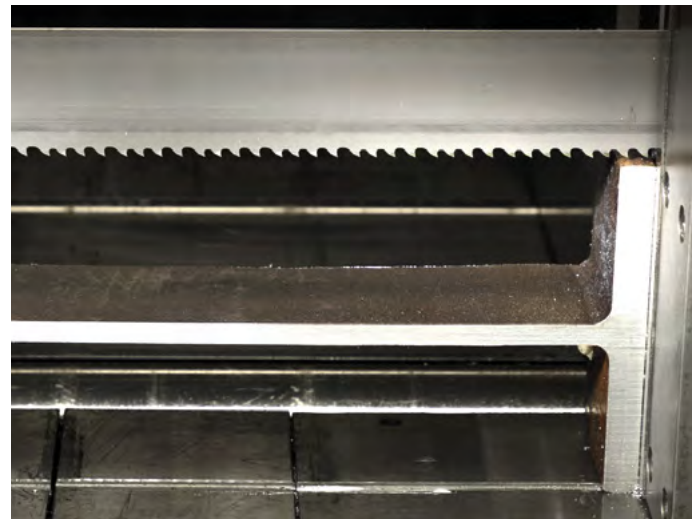
width x thickness		teeth per inch positive rake angel		
inch	mm/TPI	4/6	3/4	2/3
1 1/2	41 x 1,30	■	■	■
2	54 x 1,60	■	■	■
2 5/8	67 x 1,60		■	■
3 1/8	80 x 1,60		■	■

Product Group 452



Product Group 456

IHL



HIGH PERFORMANCE

WESPA EVOTEC

New high-performance bandsaw blade for cutting solid tool steel, mold, steel, stainless and special alloys. Advantages of the bandsaw blades is the longer blade life and increasing wear resistant in hard materials applications.

EVOTEC plus: Conventional tooth shape and setting

width x thickness		teeth per inch positive rake angel		
inch	mm/TPI	4/6	3/4	2/3
1	27 x 0,90	■	■	
1 1/4	34 x 1,10	■	■	■
1 1/2	41 x 1,30	■		

EVOTEC SCL: Unique variable tooth geometry and reinforced tooth design

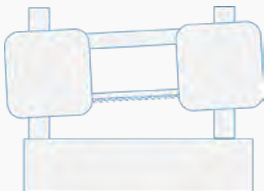
width x thickness		teeth per inch positive rake angel				
inch	mm/TPI	3/4	2/3	1,4/2	1,1/1,4	0,7/0,9
1 1/2	41 x 1,30	■	■	■		
2	54 x 1,60	■	■	■	■	
2 5/8	67 x 1,60			■	■	■
3 1/8	80 x 1,60				■	■

Product Group 465 | 466



Standard with Carbide Bandsaw Blades

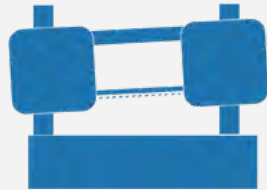
Bandsaw Machine with **Carbide Bandsaw Blade**



Carbide Performance and Bladelife

The new class in Band Saw Technology

Bandsaw Machine with **IPC-Performance Bandsaw Blade**

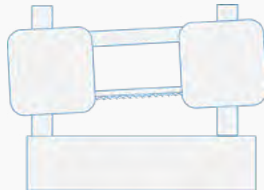


Increase of Performance* and Bladelife* for BI-Metal Bandsaw Machines

*depending on material grade and machine type

Standard with BI-METAL Bandsaw Blades

Bandsaw Machine with **BI-Metal Bandsaw Blade**



Standard BI-Metal Performance and Bladelife

Due to a better performance of our tools, the performance requirements are quickly adjusted depending on the assignment or shift work can be organized more efficiently.

The new generation of band saw blades achieves significantly higher cutting rates. This results in better productivity and efficiency. Using our IPC software we will determine which solution fits your business and can reduce your costs and improve performance.



VALUE ADDED CUTTING

WESPA Metallsägenfabrik
Simonds Industries GmbH
Spangenberg Straße 61
D - 34212 Melsungen | Germany
phone +49 5661 92630
fax +49 5661 9263166
www.wespa-simonds.de
info@wespa-simonds.de



www.saege.band